

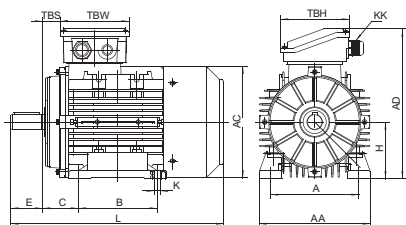
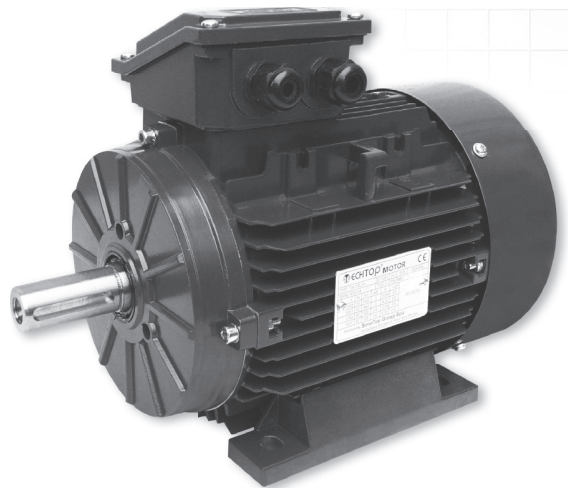
TA Motors IE1-IE2-IE3-IE4 In Aluminum Housing

FEATURES

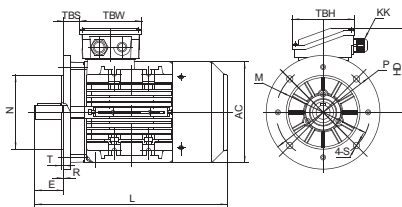
- Energy savings, high efficiency
- High starting torque, lower starting current
- Versatile and easy to modify design adapts to a variety of applications
- Removable feet
- Option of terminal box location (top, left or right)
- Option of IE2, IE3, MEPS High and Premium Efficiency for IEC standards + NEMA EPACT and Premium Efficiency
- Contained total length is the same as or shorter than the current market standard
- Full use of the magnetization properties of cold rolled silicone steel in which the stator laminations are magnetized evenly to reduce temperature rise of the winding

APPLICATIONS

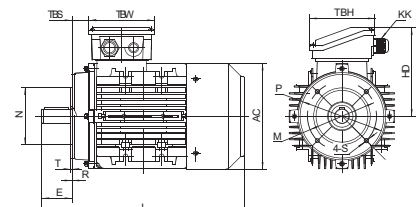
- Pumps
- Waste water treatment plants
- Air compressors, fans
- Gear reducers and power transmission
- Pulp and paper mills
- Steel mill
- Conveyors, elevators
- Should be "Material handling equipment"
- Agricultural application
- Mining equipment
- Hydraulic equipment



56-160 IM B3



56-160 IM B5



56-160 IM B14

T1A Series IE1 Efficiency Motors Technical Data (at 50Hz)

Model	Power	Current(A)			Current(A)			Current(A)			Speed (r/min)	Eff.			Power Factor	T _e /T _n (Times)	T _{max} /T _n (Times)	T _{min} /T _n (Times)	I _e /I _n (Times)	Noise dB(A)	W.T (kg)	Inertia (kg·m ²)
		220V	380V	660V	230V	400V	690V	240V	415V	720V		100%	75%	50%								
T1A 561-2	0.09	0.64	0.37	0.21	0.60	0.35	0.20	0.58	0.34	0.19	2800	55.6	49.6	39.2	0.67	2.4	2.6	2.2	3.5	58	2.80	0.00010173
T1A 562-2	0.12	0.68	0.39	0.23	0.64	0.37	0.21	0.62	0.36	0.21	2840	65.6	61.8	53.2	0.71	2.3	2.6	2.1	4.3	58	3.00	0.00012837
T1A 563-2	0.18	0.93	0.53	0.31	0.88	0.51	0.29	0.85	0.49	0.28	2780	66.5	64.2	56.8	0.77	2.3	2.5	2.4	4.1	61	3.50	0.00014170
T1A 631-2	0.18	0.95	0.55	0.32	0.90	0.52	0.30	0.87	0.50	0.29	2840	66.5	64.3	56.5	0.75	2	2.5	1.7	4.7	61	3.70	0.00014970
T1A 632-2	0.25	1.21	0.70	0.40	1.15	0.66	0.38	1.11	0.64	0.37	2840	69.8	66.2	56.8	0.78	2.5	2.7	2	5.2	61	4.10	0.00017102
T1A 633-2	0.37	1.79	1.03	0.60	1.70	0.98	0.57	1.64	0.95	0.55	2840	69.8	65.6	61.2	0.78	2	2.4	1.8	5.1	62	4.60	0.00020300
T1A 711-2	0.37	1.66	0.96	0.55	1.58	0.91	0.53	1.52	0.88	0.51	2840	71.5	70.9	65.8	0.82	2	2.2	1.4	5.1	64	5.34	0.00031368
T1A 712-2	0.55	2.41	1.39	0.80	2.29	1.32	0.76	2.21	1.27	0.74	2850	73.2	73.4	69.1	0.82	1.8	2.3	1.4	5.1	64	6.14	0.00038379
T1A 713-2	0.75	3.05	1.76	1.02	2.90	1.67	0.97	2.79	1.61	0.93	2840	77.1	77.5	74.8	0.84	2.6	2.6	1.7	6	65	7.10	0.00047547
T1A 801-2	0.75	3.35	1.93	1.12	3.18	1.84	1.06	3.07	1.77	1.02	2870	73.7	71.7	65.4	0.8	2.1	2.5	1.5	5.7	67	8.15	0.00089634
T1A 802-2	1.1	4.41	2.55	1.47	4.19	2.42	1.40	4.04	2.33	1.35	2870	79	78.8	75.4	0.83	2.6	2.8	1.8	6.5	67	9.70	0.00112377
T1A 803-2	1.5	5.87	3.39	1.96	5.58	3.22	1.86	5.38	3.10	1.79	2870	81	81.1	78.5	0.83	2.7	3	2.1	6.8	70	11.00	0.00135120
T1A 90S-2	1.5	5.94	3.43	1.98	5.65	3.26	1.88	5.44	3.14	1.81	2880	80	79.8	76.7	0.83	2.3	2.8	1.4	6.6	72	12.30	0.00185573
T1A 90L1-2	2.2	8.25	4.77	2.75	7.84	4.53	2.61	7.56	4.36	2.52	2880	83.5	84	82.2	0.84	2.6	2.7	1.8	7.1	72	14.90	0.00230595
T1A 90L2-2	3	10.8	6.24	3.60	10.3	5.92	3.42	9.89	5.71	3.30	2900	86	86.5	85.2	0.85	2.9	3	1.9	8.1	74	17.10	0.00296596
T1A 100L1-2	3	11.3	6.54	3.77	10.8	6.21	3.59	10.4	5.99	3.46	2900	83	82.7	80	0.84	2.7	3.2	2.1	7.7	76	20.10	0.00377615
T1A 100L2-2	4	15.0	8.67	5.00	14.3	8.23	4.75	13.7	7.93	4.58	2890	84.5	84.4	82.1	0.83	3.1	3.6	2.8	8.1	77	23.00	0.00466405
T1A 100L3-2	5.5	18.7	10.8	6.23	17.8	10.25	5.92	17.1	9.88	5.70	2900	88	88.6	87.7	0.88	3.3	3.6	2.5	10.1	78	26.00	0.00590710
T1A 112M1-2	4	14.2	8.2	4.75	13.5	7.81	4.51	13.0	7.53	4.34	2910	85	85	83.6	0.87	2.8	3.6	1.7	9.2	77	26.15	0.00631057
T1A 112M2-2	5.5	19.0	11.0	6.34	18.1	10.4	6.02	17.4	10.1	5.80	2900	86.5	87	86	0.88	3	3.8	2.2	9.8	78	31.20	0.00779613
T1A 112M3-2	7.5	25.8	14.9	8.59	24.5	14.1	8.16	23.6	13.6	7.87	2910	88	88	86.4	0.87	3.8	4.2	2.7	10.3	80	37.00	0.00983332
T1A 132S1-2	5.5	18.8	10.9	6.27	17.9	10.3	5.95	17.2	9.9	5.74	2900	86.5	87.2	86.1	0.89	2.1	2.9	1.7	7.8	80	37.60	0.01205798
T1A 132S2-2	7.5	25.7	14.8	8.55	24.4	14.1	8.13	23.5	13.6	7.83	2890	88.4	89.1	88.4	0.87	2.7	3.2	2.5	8.2	80	45.00	0.01521165
T1A 132M1-2	9.2	30.6	17.6	10.2	29.0	16.8	9.68	28.0	16.2	9.33	2910	88	88.1	86.5	0.9	3.1	3.8	1.7	9.7	81	51.00	0.01783446
T1A 132M2-2	11	36.5	21.1	12.2	34.7	20.0	11.6	33.5	19.3	11.2	2920	89	89	87.3	0.89	3.3	4	1.8	10.7	83	56.50	0.02035740
T1A 132M3-2	15	50.4	29.1	16.8	47.9	27.7	16.0	46.2	26.7	15.4	2940	91	90.7	89.1	0.86	4	4.5	2.5	14	86	73.00	0.02855696
T1A 160M1-2	11	38.3	22.1	12.8	36.4	21.0	12.1	35.1	20.2	11.7	2940	90	90	88.6	0.84	2.6	3.1	1.5	7.9	86	72.00	0.04437972
T1A 160M2-2	15	49.3	28.5	16.4	46.9	27.1	15.6	45.2	26.1	15.1	2940	89.9	90.4	89.6	0.89	2.6	2.9	1.4	8.5	86	82.00	0.05580496
T1A 160L1-2	18.5	62.9	36.3	21.0	59.8	34.5	19.9	57.6	33.3	19.2	2950	91	91.2	89.7	0.85	2.8	3.5	1.7	9.4	86	94.10	0.06559287
T1A 160L2-2	22	72.3	41.8	24.1	68.7	39.7	22.9	66.2	38.2	22.1	2950	92	92	90.9	0.87	3.4	3.2	1.9	9.4	91	104.50	0.07701810
T1A 180M-2	22	71.5	41.3	23.8	67.9	39.2	22.6	65.4	37.8	21.8	2950	90	90.2	89.7	0.9	2	2.2	1.2	7.5	88	121.00	0.09018470
T1A 200L1-2	30	96.2	55.5	32.1	91.4	52.8	30.5	88.1	50.8	29.4	2950	91.2	90.6	88.5	0.9	2	2.2	1.2	7.5	90	144.00	0.11499920
T1A 200L2-2	37	117.6	67.9	39.2	111.7	64.5	37.2	107.7	62.2	35.9	2940	92	92.1	91.4	0.9	2	2.2	1.2	7.5	90	170.00	0.13673820
T1A 561-4	0.06	0.54	0.31	0.18	0.52	0.30	0.17	0.50	0.29	0.17	1400	52.8	47.7	38.7	0.55	3.1	3.2	3	3.2	50	2.90	0.00018990
T1A 562-4	0.09	0.71	0.41	0.24	0.68	0.39	0.23	0.65	0.38	0.22	1400	56.2	51.7	43.1	0.59	2.3	2.5	2.8	3.1	50	3.20	0.00023991
T1A 563-4	0.12	0.89	0.51	0.30	0.84	0.49	0.28	0.81	0.47	0.27	1390	58.5	54.3	45.6	0.61	2.65	2.8	2.7	3.2	52	3.70	0.00026491
T1A 631-4	0.12	0.81	0.47	0.27	0.77	0.44	0.26	0.74	0.43	0.25	1395	60.1	56.7	48.4	0.65	2.1	2.3	1.7	3.5	52	3.70	0.00027304
T1A 632-4	0.18	1.06	0.61	0.35	1.01	0.58	0.34	0.97	0.56	0.32	1370	64.7	60.4	55.8	0.69	2.2	2.3	2.1	3.5	52	4.40	0.00033806
T1A 633-4	0.25	1.30	0.75	0.43	1.23	0.71	0.41	1.19	0.69	0.40	1360	68.5	68.8	65.1	0.74	2.1	2.3	2	3.9	54	5.00	0.00040807
T1A 711-4	0.25	1.40	0.81	0.47	1.33	0.77	0.44	1.28	0.74	0.43	1390	69	67.9	62.4	0.68	2.2	2.3	1.8	4.1	55	5.06	0.00056066
T1A 712-4	0.37	1.85	1.07	0.62	1.76	1.02	0.59	1.70	0.98	0.57	1385	70	70.5	66.2	0.75	2	2.2	1.7	4.3	55	5.96	0.00071439
T1A 713-4	0.55	2.92	1.69	0.97	2.78	1.60	0.93	2.68	1.55	0.89	1380	66	66.5	63	0.75	2.2	2.3	1.8	4.7	57	7.06	0.00091936
T1A 801-4	0.55	2.64	1.53	0.88	2.51	1.45	0.84	2.42	1.40	0.81	1420	73	72.2	67.1	0.75	2	2.3	1.6	4.8	57	8.25	0.00145276
T1A 802-4	0.75	3.39	1.96	1.13	3.22	1.86	1.08	3.11	1.79	1.04	1410	76.5	77.8	75.4	0.76	2.1	2.3	1.7	4.8	58	9.75	0.00169042
T1A 803-4	1.1	4.91	2.84	1.64	4.67	2.70	1.56	4.50	2.60	1.50	1390	77.5	79	77.4	0.76	2.3	2.4	2	5	61	11.20	0.00216574
T1A 90S-4	1.1	4.76	2.75	1.59	4.52	2.61	1.51	4.36	2.52	1.45	1410	79	79.4	76.5	0.77	2.5	2.7	2.2	5.5	61	12.30	0.00267500
T1A 90L1-4	1.5	6.26	3.62	2.09	5.95	3.44	1.98	5.74	3.31	1.91	1410	80.8	81.7	79.7	0.78	2.9	3	2.5	6.2	61	15.10	0.00351865
T1A 90L1-4B	1.85	7.57	4.37	2.52	7.19	4.15	2.40	6.93	4.00	2.31	1415	81.4	82.3	80.6	0.79	3.1	3	2.5	6.5	62	16.60	0.00418540
T1A 90L2-4	2.2	8.84	5.10	2.95	8.39	4.85	2.80	8.09	4.67	2.70	1410	81.9	83.2	82	0.8	3.2	3.1	2.6	6.7	64	17.78	0.00468546
T1A 100L1-4	2.2	8.88	5.13	2.96	8.44	4.87	2.81	8.13	4.70	2.71	1430	82.5	83.5	82.1	0.79	2.2	2.7	1.9	6.3	64	19.75	0.00677509
T1A 100L2-4	3	11.4	6.58	3.80	10.8	6.25	3.61	10.4	6.02	3.48	1430	84.5	85.4	84.4	0.82	2.5	2.8	2.1	6.7	64	23.10	0.00842419
T1A 100L3-4	4	16.6	9.61	5.55	15.8	9.13	5.27	15.2	8.80	5.08	1440	84.3	84.3	81.9	0.75	3	3.5	2.6	7.1	65	28.20	0.01073293
T1A 112M1-4	4	15.8	9.11	5.26	15.0	8.66	5.00	14.5	8.34	4.82	1440	85.5	85.6	83.7	0.78	2.3	3.3	2.1	7.8	65	29.80	0.01322838
T1A 112M2-4	5.5	20.4	11.8	6.81	19.4	11.2	6.47	18.7	10.8	6.23	1440	87.5	88.4	87.8	0.81	2.6	3.5	2.4	7.9	71	36.00	0.01683909
T1A 132S-4	5.5	20.5	11.9	6.84	19.5	11.3	6.50	18.8	10.9	6.26	1450	86	86.4	84.8	0.82	1.8	2.9	1.7	7.1	71	42.20	0.02801223
T1A 132M1-4	7.5	26.6	15.4	8.87	25.3	14.6	8.43	24.4	14.1	8.12	1460											

T1A Series IE1 Efficiency Motors Technical Data (at 50Hz)

Model	Power	Current(A)			Current(A)			Current(A)			Speed (r/min)	Eff.			Power Factor	T _{st} /T _n (Times)	T _{max} /T _n (Times)	T _{min} /T _n (Times)	I _{st} /I _n (Times)	Noise dB(A)	W.T (kg)	Inertia (kg·m ²)
		220V	380V	660V	230V	400V	690V	240V	415V	720V		100%	75%	50%								
T1A 160M-4	11	40.7	23.5	13.6	38.6	22.3	12.9	37.2	21.5	12.4	1460	89	89.2	87.8	0.8	2.3	2.8	1.4	6.8	75	77.50	0.08025397
T1A 160L1-4	15	51.6	29.8	17.2	49.0	28.3	16.4	47.3	27.3	15.8	1450	88.9	90.5	90.9	0.86	2.1	2.1	1.1	6.8	75	96.00	0.10563970
T1A 160L2-4	18.5	64.5	37.3	21.5	61.3	35.4	20.4	59.1	34.1	19.7	1460	90.9	91.4	91.1	0.83	2.4	2.5	1.4	7.6	78	104.00	0.12761860
T1A 160L3-4	22	74.0	42.7	24.7	70.3	40.6	23.4	67.8	39.1	22.6	1470	92	92.3	91.5	0.85	2.6	2.9	1.4	9	80	118.50	0.14959750
T1A 180M-4	18.5	62.6	36.1	20.9	59.4	34.3	19.8	57.3	33.1	19.1	1460	90.5	90.7	89.9	0.86	2.2	2.2	1.4	7.5	80	118.00	0.15506360
T1A 180L-4	22	74.0	42.7	24.7	70.3	40.6	23.4	67.7	39.1	22.6	1460	91	91.3	90.6	0.86	2.2	2.2	1.4	7.5	80	128.00	0.17329310
T1A 200L-4	30	99.8	57.6	33.3	94.8	54.7	31.6	91.4	52.8	30.5	1470	92	92.2	91.6	0.86	2.2	2.2	1.4	7.5	83	153.00	0.22408390
T1A 631-6	0.09	0.74	0.42	0.25	0.70	0.40	0.23	0.67	0.39	0.22	870	51.1	49.2	42.5	0.63	1.8	2	1.9	2.6	50	4.20	0.00041778
T1A 632-6	0.12	0.91	0.53	0.30	0.87	0.50	0.29	0.84	0.48	0.28	850	51.6	51.2	43.1	0.67	1.8	2	1.8	2.7	50	4.50	0.00051688
T1A 633-6	0.18	1.33	0.77	0.44	1.26	0.73	0.42	1.22	0.70	0.41	850	54	52	47.6	0.66	2	2.1	1.9	3	52	4.80	0.00059864
T1A 711-6	0.18	1.25	0.72	0.42	1.19	0.69	0.40	1.14	0.66	0.38	890	56.6	54.4	46.3	0.67	1.9	2.2	1.8	3.1	52	5.60	0.00084095
T1A 712-6	0.25	1.62	0.93	0.54	1.54	0.89	0.51	1.48	0.86	0.49	910	61.6	59.7	52.2	0.66	2.1	2.3	1.9	3.4	52	6.00	0.00096467
T1A 713-6	0.37	2.23	1.28	0.74	2.11	1.22	0.70	2.04	1.18	0.68	900	66.3	65.5	59.7	0.66	2.4	2.5	2.3	3.7	54	6.80	0.00115024
T1A 801-6	0.37	2.42	1.40	0.81	2.30	1.33	0.77	2.21	1.28	0.74	910	61	58.6	50.7	0.66	1.9	2.2	1.8	3.2	56	8.00	0.00159634
T1A 802-6	0.55	2.99	1.73	1.00	2.84	1.64	0.95	2.74	1.58	0.91	920	71.2	71.1	66	0.68	1.9	2.3	1.8	3.8	56	9.25	0.00204109
T1A 803-6	0.75	3.86	2.23	1.29	3.67	2.12	1.22	3.54	2.04	1.18	910	72	73.1	69.6	0.71	1.9	2.2	1.8	3.9	58	10.60	0.00263409
T1A 90S-6	0.75	4.06	2.34	1.35	3.86	2.23	1.29	3.72	2.15	1.24	940	71.5	70.9	65.8	0.68	1.8	2.2	1.5	4.1	59	11.80	0.00326564
T1A 90L1-6	1.1	5.97	3.45	1.99	5.67	3.27	1.89	5.46	3.15	1.82	930	73.5	73.4	69	0.66	1.9	2.3	1.8	4.1	59	14.20	0.00428110
T1A 90L2-6	1.5	6.98	4.03	2.33	6.63	3.83	2.21	6.39	3.69	2.13	925	77.5	78.7	76.6	0.73	2.2	2.5	1.9	4.8	61	15.50	0.00548739
T1A 100L1-6	1.5	7.22	4.17	2.41	6.86	3.96	2.29	6.61	3.82	2.20	940	77	77.9	75.3	0.71	1.7	2.2	1.6	4.5	61	18.70	0.00754254
T1A 100L2-6	2.2	9.71	5.61	3.24	9.22	5.33	3.07	8.89	5.13	2.96	940	79.5	81	79.8	0.75	1.9	2.3	1.7	5	64	22.80	0.00993467
T1A 112M1-6	2.2	10.6	6.11	3.53	10.1	5.80	3.35	9.69	5.59	3.23	945	79.3	79.5	76.5	0.69	1.9	2.3	1.8	4.8	64	24.50	0.01395044
T1A 112M2-6	3	12.5	7.21	4.17	11.9	6.85	3.96	11.4	6.61	3.81	940	81	84	84.6	0.78	1.6	2.1	1.5	4.8	64	28.50	0.01767543
T1A 132S-6	3	12.5	7.20	4.16	11.8	6.84	3.95	11.4	6.59	3.81	965	84.4	85.7	85.1	0.75	1.7	2.2	1.3	5.6	64	36.40	0.03045714
T1A 132M1-6	4	17.1	9.85	5.69	16.2	9.36	5.40	15.6	9.02	5.21	965	84.5	85.1	83.6	0.73	2	2.6	1.5	5.9	68	42.20	0.03725132
T1A 132M2-6	5.5	23.4	13.5	7.79	22.2	12.8	7.40	21.4	12.4	7.13	965	86	87.6	87.7	0.72	2.1	2.4	1.6	5.8	68	51.40	0.04896639
T1A 132M3-6	7.5	30.2	17.5	10.1	28.7	16.6	9.58	27.7	16.0	9.23	965	87	87.3	85.8	0.75	2.7	2.9	2	7.3	68	62.60	0.06235504
T1A 160M-6	7.5	30.2	17.5	10.1	28.7	16.6	9.58	27.7	16.0	9.23	965	87	87.8	87.1	0.75	2.4	2.9	1.7	6.7	68	71.40	0.08622631
T1A 160L1-6	11	44.5	25.7	14.8	42.2	24.4	14.1	40.7	23.5	13.6	965	86.8	88.1	87.9	0.75	2.4	2.1	1.2	6.2	73	89.40	0.11687380
T1A 160L2-6	15	56.9	32.8	19.0	54.0	31.2	18.0	52.1	30.1	17.4	970	89	88.2	87.9	0.78	2.6	2.6	1.1	7.7	79	105.00	0.15484950
T1A 180L-6	15	54.8	31.6	18.3	52.0	30.0	17.3	50.1	28.9	16.7	970	89	89	88.6	0.81	2	2.2	1.3	6.5	77	124.00	0.25406280
T1A 200L1-6	18.5	66.8	38.6	22.3	63.4	36.6	21.1	61.1	35.3	20.4	975	90	90.2	89.5	0.81	2	2.2	1.3	6.5	80	141.00	0.30394140
T1A 200L2-6	22	77.5	44.7	25.8	73.6	42.5	24.5	71.0	41.0	23.7	975	90	90.2	89.4	0.83	2	2.2	1.3	6.5	80	152.00	0.35316010
T1A 711-8	0.09	1.05	0.61	0.35	1.00	0.58	0.33	0.96	0.56	0.32	680	38.2	28.8	24.1	0.59	1.8	2.2	1.7	2.3	50	5.60	0.00071723
T1A 712-8	0.12	1.20	0.70	0.40	1.14	0.66	0.38	1.10	0.64	0.37	690	42.3	36.6	27.7	0.62	1.8	2.2	1.7	2.5	50	6.00	0.00084095
T1A 801-8	0.18	1.48	0.86	0.49	1.41	0.81	0.47	1.36	0.79	0.45	690	55	51.5	43.4	0.58	2.2	2.4	2	3	52	8.30	0.00202145
T1A 802-8	0.25	1.94	1.12	0.65	1.84	1.06	0.61	1.78	1.03	0.59	690	58.5	55.5	47.9	0.58	2.3	2.4	2	3.1	52	9.30	0.00232255
T1A 803-8	0.37	2.46	1.42	0.82	2.34	1.35	0.78	2.26	1.30	0.75	700	67	62.5	58.3	0.59	2	2.5	2	3.5	56	9.96	0.00262366
T1A 90S-8	0.37	2.58	1.49	0.86	2.45	1.42	0.82	2.36	1.37	0.79	710	65	62.2	54.8	0.58	1.7	2.2	1.6	3.2	56	11.38	0.00326564
T1A 90L1-8	0.55	3.84	2.22	1.28	3.65	2.11	1.22	3.52	2.03	1.17	705	65	62.6	55.6	0.58	1.9	2.3	1.7	3.4	56	13.94	0.00428110
T1A 90L2-8	0.75	4.69	2.71	1.56	4.45	2.57	1.49	4.29	2.48	1.43	700	69	67.5	61.8	0.61	1.8	2.1	1.8	3.5	59	15.50	0.00488424
T1A 100L1-8	0.75	4.43	2.56	1.48	4.21	2.43	1.40	4.06	2.34	1.35	685	68.5	68	62.7	0.65	1.9	2.2	1.8	3.6	59	17.60	0.00634648
T1A 100L2-8	1.1	5.85	3.38	1.95	5.56	3.21	1.85	5.35	3.09	1.79	700	75	75	71.3	0.66	1.8	2.4	1.8	4.2	59	20.00	0.00833992
T1A 112M-8	1.5	7.87	4.54	2.62	7.48	4.32	2.49	7.21	4.16	2.40	700	76	76.5	73.4	0.66	1.8	2.3	1.8	4	61	25.30	0.01395044
T1A 132S-8	2.2	10.6	6.13	3.54	10.1	5.83	3.36	9.73	5.62	3.24	715	79	79	76	0.69	1.9	2.4	1.7	4.9	64	39.60	0.03213071
T1A 132M-8	3	13.7	7.89	4.55	13.0	7.49	4.33	12.5	7.22	4.17	715	81.4	82	80	0.71	2	2.5	1.8	5.1	64	47.40	0.04059848
T1A 160M1-8	4	18.3	10.6	6.11	17.4	10.1	5.81	16.8	9.70	5.60	715	82	82.6	80.7	0.7	1.8	2.3	1.6	4.6	68	59.80	0.07103601
T1A 160M2-8	5.5	24.8	14.3	8.25	23.5	13.6	7.84	22.7	13.1	7.56	710	83.5	84.4	83.1	0.7	1.9	2.4	1.8	4.8	68	69.00	0.08622631
T1A 160L-8	7.5	33.0	19.0	11.0	31.3	18.1	10.4	30.2	17.4	10.1	715	85.5	86	84.5	0.7	2.5	2.8	2	5.7	68	84.80	0.11307620
T1A 180L-8	11	45.4	26.2	15.1	43.1	24.9	14.4	41.5	24.0	13.8	715	87.4	87.2	85.7	0.73	1.9	2.2	1.2	6	76	124.00	0.26109400
T1A 200L1-8	15	59.0	34.1	19.7	56.1	32.4	18.7	54.0	31.2	18.0	725	88	88	86.9	0.76	1.9	2.2	1.2	6	79	154.00	0.33909760
T1A 200L2-8	18.5	71.2	41.1	23.7	67.6	39.0	22.5	65.2	37.6	21.7	730	90.0	90.0	88.8	0.76	1.9	2.2	1.2	6	79	175.00	0.40941010

T2A Series IE2 Efficiency Motors Technical Data (at 50Hz)

Model	Power	Current(A)			Current(A)			Current(A)			Speed (r/min)	Eff.			Power Factor	T _{star} /T _n (Times)	T _{max} /T _n (Times)	T _{min} /T _n (Times)	I _s /I _n (Times)	Noise dB(A)	W.T (kg)	Inertia (kg·m ²)
		220V	380V	660V	230V	400V	690V	240V	415V	720V		100%	75%	50%								
T2A 631-2	0.18	0.95	0.55	0.32	0.90	0.52	0.30	0.87	0.50	0.29	2840	66.5	64.3	56.5	0.75	2	2.5	1.7	4.7	61	3.6	0.00023100
T2A 632-2	0.25	1.21	0.70	0.40	1.15	0.66	0.38	1.11	0.64	0.37	2840	69.8	68.5	62.6	0.78	2.5	2.7	2	5.2	61	3.9	0.00025500
T2A 633-2	0.37	1.79	1.03	0.60	1.70	0.98	0.57	1.64	0.95	0.55	2840	69.8	68.5	62.6	0.78	2	2.4	1.8	5.1	62	4.6	0.00030304
T2A 711-2	0.37	1.64	0.95	0.55	1.56	0.90	0.52	1.50	0.87	0.50	2840	71.5	70.9	65.8	0.83	2	2.2	1.4	5.1	64	4.9	0.00034600
T2A 712-2	0.55	2.32	1.34	0.77	2.21	1.27	0.74	2.13	1.23	0.71	2860	75.1	75.2	71.4	0.83	2.3	2.4	1.5	5.9	64	5.8	0.00045800
T2A 713-2	0.75	3.04	1.75	1.01	2.88	1.67	0.96	2.78	1.60	0.93	2840	77.4	78	75.1	0.84	2.6	2.6	1.7	6	65	7.1	0.00056896
T2A 801-2	0.75	3.15	1.82	1.05	2.99	1.73	1.00	2.88	1.66	0.96	2840	77.4	78	75.2	0.81	2.6	2.8	2.2	6.1	67	8.4	0.00089634
T2A 802-2	1.1	4.43	2.56	1.48	4.21	2.43	1.40	4.06	2.34	1.35	2860	79.6	79.9	77.5	0.82	2.6	2.6	1.8	7	67	9.8	0.00112377
T2A 803-2	1.5	5.78	3.34	1.93	5.49	3.17	1.83	5.29	3.06	1.76	2880	81.3	82	80.4	0.84	2.9	3.1	2	7.4	70	11.3	0.00142701
T2A 90S-2	1.5	5.92	3.42	1.97	5.63	3.25	1.88	5.42	3.13	1.81	2880	81.3	81.6	79.5	0.82	2.8	3	2	7.2	72	12.4	0.00185573
T2A 90L1-2	2.2	8.38	4.84	2.79	7.96	4.60	2.66	7.68	4.43	2.56	2890	83.2	83.8	82.1	0.83	2.8	3.1	1.4	7.6	72	14.95	0.00230595
T2A 90L2-2	3	11.0	6.34	3.66	10.4	6.02	3.48	10.1	5.80	3.35	2880	84.6	85.8	85.2	0.85	3.4	3.3	2.3	7.9	74	17.2	0.00296596
T2A 100L1-2	3	11.1	6.41	3.70	10.6	6.09	3.52	10.2	5.87	3.39	2890	84.6	84.9	83.2	0.84	3	3.6	2.7	7.6	76	21.7	0.00413131
T2A 100L2-2	4	14.1	8.14	4.70	13.4	7.73	4.47	12.9	7.46	4.30	2910	85.8	86	84.7	0.87	3.7	4.2	3.8	9.9	77	25.8	0.00519679
T2A 112M1-2	4	13.8	7.96	4.60	13.1	7.56	4.37	12.6	7.29	4.21	2920	85.8	86.2	85	0.89	3.3	3.6	2	9.6	77	26.7	0.00631057
T2A 112M2-2	5.5	19.1	11.0	6.37	18.2	10.5	6.06	17.5	10.1	5.84	2920	87	87.3	86.1	0.87	3.4	4.1	2.8	10.2	78	32.5	0.00805674
T2A 112M3-2	7.5	24.9	14.4	8.30	23.6	13.7	7.88	22.8	13.2	7.60	2920	88.1	88.6	87.5	0.9	3.7	4	2.6	11.3	80	37	0.00983332
T2A 132S1-2	5.5	18.7	10.8	6.23	17.8	10.3	5.92	17.1	9.88	5.71	2920	87	87.6	86.6	0.89	2.4	3.4	1.9	8.3	80	39.7	0.01331945
T2A 132S2-2	7.5	24.6	14.2	8.21	23.4	13.5	7.80	22.5	13.0	7.51	2930	88.1	88.6	87.9	0.91	2.5	3.5	1.4	9.8	80	47.3	0.01647312
T2A 132M1-2	9.2	30.0	17.3	10.0	28.5	16.5	9.50	27.5	15.9	9.16	2920	88.7	89.7	89.6	0.91	2.5	3.3	1.9	9.5	81	52	0.01783446
T2A 132M2-2	11	36.0	20.8	12.0	34.2	19.7	11.4	32.9	19.0	11.0	2930	89.4	89.6	88.7	0.9	4	3.9	1.7	12.7	83	58.5	0.02161887
T2A 132M3-2	15	48.6	28.0	16.2	46.1	26.6	15.4	44.5	25.7	14.8	2940	90.3	90.5	89.6	0.9	3.7	4.3	1.7	13.6	86	74	0.02855696
T2A 160M1-2	11	36.4	21.0	12.1	34.6	20.0	11.5	33.3	19.2	11.1	2950	89.4	89.5	88.2	0.89	2.6	3.4	1.5	8.4	86	77	0.05009234
T2A 160M2-2	15	48.6	28.0	16.2	46.1	26.6	15.4	44.5	25.7	14.8	2950	90.3	90.5	89.7	0.9	2.6	3.4	1.8	9.4	86	91	0.06532599
T2A 160L1-2	18.5	58.2	33.6	19.4	55.3	31.9	18.4	53.3	30.8	17.8	2940	90.9	91.8	91.9	0.92	2.5	2.9	1.2	8.7	86	101	0.07701810
T2A 160L2-2	22	69.7	40.2	23.2	66.2	38.2	22.1	63.8	36.8	21.3	2950	91.3	91.5	90.8	0.91	3.1	3.6	1.8	10.6	91	112.5	0.09034755
T2A 180M-2	22	69.7	40.2	23.2	66.2	38.2	22.1	63.8	36.8	21.3	2950	91.3	90.9	88.8	0.91	2.5	2	1.4	8.1	88	128	0.09501562
T2A 200L1-2	30	95.3	55.1	31.8	90.6	52.3	30.2	87.3	50.4	29.1	2960	92	92.1	91.1	0.9	3.1	3.2	1.4	9.5	90	158	0.12224550
T2A 200L2-2	37	115.7	66.8	38.6	109.9	63.4	36.6	105.9	61.2	35.3	2960	92.5	92.3	91.3	0.91	2.8	3.5	1.4	9.6	90	181	0.14881550
T2A 631-4	0.12	0.81	0.47	0.27	0.77	0.44	0.26	0.74	0.43	0.25	1395	60.1	56.7	48.2	0.65	2.2	2.3	1.7	3.5	52	3.5	0.00027400
T2A 632-4	0.18	1.00	0.58	0.33	0.95	0.55	0.32	0.92	0.53	0.31	1350	64.7	64.9	60.3	0.73	2	2.1	1.9	3.6	52	4	0.00033600
T2A 633-4	0.25	1.30	0.75	0.43	1.23	0.71	0.41	1.19	0.69	0.40	1360	68.5	67.7	62.7	0.74	2.1	2.3	2	4	54	5	0.00039876
T2A 711-4	0.25	1.41	0.81	0.47	1.34	0.77	0.45	1.29	0.75	0.43	1400	69.6	68.5	62.9	0.67	2.2	2.3	1.8	4.1	55	5.2	0.00059300
T2A 712-4	0.37	1.83	1.06	0.61	1.74	1.01	0.58	1.68	0.97	0.56	1400	72.7	73	69.2	0.73	2.4	2.5	2	4.7	55	6.3	0.00081600
T2A 801-4	0.55	2.68	1.55	0.89	2.55	1.47	0.85	2.46	1.42	0.82	1420	77.1	77.1	73.9	0.7	2.4	2.8	2.1	5.4	57	8.95	0.00145276
T2A 802-4	0.75	3.49	2.02	1.16	3.32	1.92	1.11	3.20	1.85	1.07	1420	79.6	79.8	77.1	0.71	2.7	2.9	2.4	5.7	58	10.4	0.00192808
T2A 803-4	1.1	4.94	2.85	1.65	4.69	2.71	1.56	4.52	2.61	1.51	1420	81.4	81.9	79.7	0.72	3.1	3.1	2.5	5.9	61	12.3	0.00252222
T2A 90S-4	1.1	4.74	2.74	1.58	4.50	2.60	1.50	4.34	2.51	1.45	1430	81.4	81.9	79.7	0.75	2.9	3.1	2.2	6.8	61	13.85	0.00334175
T2A 90L1-4	1.5	6.27	3.62	2.09	5.96	3.44	1.99	5.74	3.32	1.91	1430	82.8	83.4	81.6	0.76	3.1	3.2	2.2	6.5	61	16.45	0.00418540
T2A 90L2-4	2.2	9.04	5.22	3.01	8.58	4.96	2.86	8.27	4.78	2.76	1430	84.3	84.5	82.3	0.76	4.2	4	3.4	7.7	64	18.8	0.00535221

T2A Series IE2 Efficiency Motors Technical Data (at 50Hz)

Model	Power	Current(A)			Current(A)			Current(A)			Speed (r/min)	Eff.			Power Factor	T _{start} /T _n (Times)	T _{max} /T _n (Times)	T _{min} /T _n (Times)	I _s /I _n (Times)	Noise dB(A)	W.T (kg)	Inertia (kg*m ²)
		220V	380V	660V	230V	400V	690V	240V	415V	720V		100%	75%	50%								
T2A 100L1-4	2.2	8.38	4.84	2.79	7.96	4.59	2.65	7.67	4.43	2.56	1440	84.3	85.2	84.3	0.82	2.4	2.9	2	6.6	64	22.2	0.00776455
T2A 100L2-4	3	11.5	6.66	3.85	11.0	6.33	3.66	10.6	6.10	3.52	1450	85.5	86.1	84.9	0.8	2.3	3.2	2.4	7.6	64	25.9	0.00974347
T2A 100L3-4	4	15.2	8.77	5.06	14.4	8.33	4.81	13.9	8.03	4.64	1440	86.6	87.4	86.5	0.8	2.8	3.2	2.3	7.2	65	28.6	0.01106275
T2A 112M1-4	4	14.8	8.56	4.94	14.1	8.13	4.69	13.6	7.84	4.52	1440	86.6	87.7	87.2	0.82	2.5	3.3	2.3	7.9	65	31.4	0.01374420
T2A 112M2-4	5.5	20.6	11.9	6.88	19.6	11.3	6.53	18.9	10.9	6.30	1440	87.7	88.6	88.1	0.8	3.7	3.6	3.1	8.3	71	36.7	0.01735491
T2A 132S-4	5.5	19.9	11.5	6.63	18.9	10.9	6.30	18.2	10.5	6.07	1460	87.7	88.1	87	0.83	2.1	3.5	1.9	8.6	71	44.3	0.03059302
T2A 132M1-4	7.5	26.8	15.5	8.94	25.5	14.7	8.49	24.5	14.2	8.18	1460	88.7	89.4	88.6	0.83	2.7	3.2	1.7	8.9	71	54.5	0.03972562
T2A 132M2-4	9.2	31.9	18.4	10.6	30.3	17.5	10.1	29.2	16.9	9.75	1460	89.2	90.1	89.9	0.85	2.9	3.2	1.7	8.7	74	56.6	0.04617758
T2A 132M3-4	11	37.9	21.9	12.6	36.0	20.8	12.0	34.7	20.0	11.6	1460	89.8	90.5	90.1	0.85	3.3	3.6	1.4	9.3	75	66.2	0.05391993
T2A 160M-4	11	38.8	22.4	12.9	36.9	21.3	12.3	35.6	20.5	11.9	1460	89.8	90.4	90	0.83	2.5	2.7	1.7	7	75	82	0.08967352
T2A 160L1-4	15	51.9	29.9	17.3	49.3	28.4	16.4	47.5	27.4	15.8	1470	90.6	91.2	90.6	0.84	2.5	2.8	1.6	8.3	75	103.2	0.11819900
T2A 160L2-4	18.5	63.5	36.7	21.2	60.4	34.9	20.1	58.2	33.6	19.4	1470	91.2	91.4	90.7	0.84	2.7	3	1.7	8.8	78	115	0.13703810
T2A 180M-4	18.5	61.4	35.4	20.5	58.3	33.7	19.4	56.2	32.4	18.7	1460	91.2	91.6	91.1	0.87	2.4	3	1.8	7.8	80	119	0.15506360
T2A 180L-4	22	71.8	41.5	23.9	68.2	39.4	22.7	65.8	38.0	21.9	1460	91.6	92.2	91.9	0.88	2.4	2.8	1.7	7.7	80	129	0.17329310
T2A 200L-4	30	99.5	57.4	33.2	94.5	54.6	31.5	91.1	52.6	30.4	1470	92.3	92.6	92	0.86	3.2	3.7	2.3	9.5	83	169	0.24231330
T2A 632-6	0.12	0.93	0.54	0.31	0.88	0.51	0.29	0.85	0.49	0.28	850	50.6	50.2	42.4	0.67	1.8	2	1.8	2.7	50	4.5	0.00052145
T2A 711-6	0.18	1.25	0.72	0.42	1.19	0.69	0.40	1.14	0.66	0.38	850	56.6	54.4	46.3	0.67	1.9	2.2	1.8	3.1	52	5.05	0.00071300
T2A 712-6	0.25	1.62	0.93	0.54	1.54	0.89	0.51	1.48	0.86	0.49	910	61.6	59.7	52.2	0.66	2.1	2.3	1.9	3.3	52	6	0.00094300
T2A 801-6	0.37	2.18	1.26	0.73	2.07	1.20	0.69	2.00	1.15	0.67	935	67.6	63.8	59.6	0.66	1.9	2.2	1.7	3.8	56	8.9	0.00174459
T2A 802-6	0.55	2.91	1.68	0.97	2.77	1.60	0.92	2.67	1.54	0.89	935	73.1	71.6	69.7	0.68	2	2.4	2	4	56	10.2	0.00233759
T2A 803-6	0.75	3.88	2.24	1.29	3.69	2.13	1.23	3.55	2.05	1.18	920	75.9	75.4	71.3	0.67	2.7	2.6	2.5	4.2	58	11.7	0.00307884
T2A 90S-6	0.75	4.00	2.31	1.33	3.80	2.19	1.27	3.66	2.11	1.22	940	75.9	75.3	71.1	0.65	2.2	2.5	1.9	4.5	59	12.55	0.00346669
T2A 90L1-6	1.1	5.37	3.10	1.79	5.10	2.95	1.70	4.92	2.84	1.64	950	78.1	78.4	75.6	0.69	2	2.4	1.8	4.9	59	15.2	0.00488424
T2A 90L2-6	1.5	7.27	4.20	2.42	6.91	3.99	2.30	6.66	3.85	2.22	945	79.8	80.1	77.5	0.68	2.7	3	2.5	5.1	61	18.2	0.00629158
T2A 100L1-6	1.5	6.68	3.86	2.23	6.35	3.67	2.12	6.12	3.53	2.04	950	79.8	81.7	81.2	0.74	1.7	2.2	1.6	4.8	61	20.65	0.00833992
T2A 100L2-6	2.2	9.83	5.68	3.28	9.34	5.39	3.11	9.00	5.20	3.00	950	81.8	82.6	81.1	0.72	2.5	2.7	2.1	5.5	64	25	0.01152942
T2A 112M-6	2.2	9.70	5.60	3.23	9.21	5.32	3.07	8.88	5.13	2.96	955	81.8	82.9	81.8	0.73	2.1	2.7	1.8	5.5	64	26	0.01544044
T2A 112M2-6	3	13.2	7.60	4.39	12.5	7.22	4.17	12.1	6.96	4.02	955	83.3	84.4	83.3	0.72	2.3	2.8	2.1	5.7	64	31	0.01916542
T2A 132S-6	3	12.5	7.20	4.16	11.8	6.84	3.95	11.4	6.59	3.81	960	83.3	84.8	84.4	0.76	1.6	2.4	1.5	5.6	64	37.8	0.03213071
T2A 132M1-6	4	16.8	9.71	5.61	16.0	9.22	5.32	15.4	8.89	5.13	965	84.6	85.6	84.8	0.74	2	2.6	1.6	5.9	68	43.8	0.03892490
T2A 132M2-6	5.5	22.4	13.0	7.48	21.3	12.3	7.11	20.5	11.9	6.85	965	86	87.2	86.8	0.75	2.4	2.6	1.8	6.6	68	51.8	0.04896639
T2A 132M3-6	7.5	29.8	17.2	9.93	28.3	16.3	9.43	27.3	15.7	9.09	970	87.2	87.8	87	0.76	3.1	3.2	1.9	7.9	68	66	0.06570220
T2A 160M-6	7.5	29.4	17.0	9.80	27.9	16.1	9.31	26.9	15.5	8.97	965	87.2	88.1	87.7	0.77	2.5	2.9	1.8	6.9	68	74	0.09382144
T2A 160L1-6	11	42.9	24.8	14.3	40.8	23.6	13.6	39.3	22.7	13.1	970	88.7	89.4	88.7	0.76	2.2	2.3	1.3	6.5	73	93	0.12826650
T2A 160L2-6	15	57.2	33.0	19.1	54.3	31.3	18.1	52.3	30.2	17.4	965	89.7	90	90.4	0.77	3.1	3	2.2	8.3	79	116	0.17003980
T2A 180L-6	15	53.0	30.6	17.7	50.4	29.1	16.8	48.5	28.0	16.2	975	89.7	89.5	88.7	0.83	2.2	2.7	1.2	8	77	130	0.25406280
T2A 200L1-6	18.5	66.5	38.4	22.2	63.2	36.5	21.1	60.9	35.1	20.3	980	90.4	90.7	89.8	0.81	2.5	2.9	1.7	7.6	80	149	0.30394140
T2A 200L2-6	22	76.7	44.3	25.6	72.9	42.1	24.3	70.3	40.6	23.4	980	90.9	91.2	90.5	0.83	2.3	2.6	2.3	7.6	80	167	0.35316010

T3A Series IE3 Efficiency Motors Technical Data (at 50Hz)

Model	Power	Current(A)			Current(A)			Current(A)			Speed (r/min)	Eff.			Power Factor	T _{start} /T _n (Times)	T _{max} /T _n (Times)	T _{min} /T _n (Times)	I _s /I _n (Times)	Noise dB(A)	W.T (kg)	Inertia (kg·m ²)
		220V	380V	660V	230V	400V	690V	240V	415V	720V		100%	75%	50%								
T3A 631-2	0.18	0.96	0.55	0.32	0.91	0.53	0.30	0.88	0.51	0.29	2850	65.9	63.5	56.2	0.75	2	2.5	1.6	4.7	61	3.6	0.00023100
T3A 632-2	0.25	1.21	0.70	0.40	1.15	0.66	0.38	1.11	0.64	0.37	2840	69.7	68.4	62.5	0.78	2.5	2.7	2	5.2	61	3.9	0.00025500
T3A 711-2	0.37	1.74	1.00	0.58	1.65	0.95	0.55	1.59	0.92	0.53	2860	73.8	72.4	66.5	0.76	2.5	2.8	1.8	5.6	64	5.2	0.00036900
T3A 712-2	0.55	2.33	1.34	0.78	2.21	1.28	0.74	2.13	1.23	0.71	2860	77.8	63.5	56.2	0.8	3.1	3.1	2	6.5	64	6.2	0.00049500
T3A 713-2	0.75	2.98	1.72	0.99	2.83	1.64	0.94	2.73	1.58	0.91	2870	80.7	80.8	78.2	0.82	3	3.2	2.2	7.1	65	7.1	0.00060600
T3A 801-2	0.75	3.02	1.74	1.01	2.87	1.66	0.96	2.76	1.60	0.92	2890	80.7	80.3	77.2	0.81	3.1	3.2	2.3	7.4	67	8.9	0.00097215
T3A 802-2	1.1	4.27	2.46	1.42	4.06	2.34	1.35	3.91	2.26	1.30	2900	82.7	82.5	79.9	0.82	3.2	3.2	2.2	7.8	67	10.6	0.00127539
T3A 803-2	1.5	5.79	3.34	1.93	5.50	3.17	1.83	5.30	3.06	1.77	2910	84.2	83.9	81.5	0.81	4	4	2.2	9.6	70	12.5	0.00165443
T3A 90S-2	1.5	5.72	3.30	1.91	5.43	3.14	1.81	5.24	3.02	1.75	2900	84.2	83.8	81.4	0.82	3.5	3.7	2.1	8.3	72	14	0.00218574
T3A 90L1-2	2.2	8.02	4.63	2.67	7.62	4.40	2.54	7.35	4.24	2.45	2910	85.9	86.1	84.7	0.84	3.3	3.7	1.5	9	72	16.3	0.00263595
T3A 90L2-2	3	11.3	6.54	3.78	10.8	6.21	3.59	10.4	5.99	3.46	2910	87.1	87.1	84.2	0.8	4	4.1	2.6	9.6	74	18.5	0.00340596
T3A 100L1-2	3	10.2	5.88	3.39	9.68	5.59	3.23	9.33	5.38	3.11	2910	87.1	87.5	86.3	0.89	3.2	3.6	2.6	9.4	76	23.7	0.00484163
T3A 100L2-2	4	13.0	7.50	4.33	12.3	7.12	4.11	11.9	6.87	3.96	2910	88.1	88.8	88.1	0.92	2.8	3.3	2.1	9.1	77	27.6	0.00590710
T3A 112M1-2	4	13.1	7.58	4.38	12.5	7.20	4.16	12.0	6.94	4.01	2920	88.1	88.2	87	0.91	3.4	3.9	2.4	10.5	77	30.1	0.00750510
T3A 112M2-2	5.5	17.8	10.3	5.94	16.9	9.78	5.65	16.3	9.43	5.44	2920	89.2	89.6	89.1	0.91	3.3	4.2	2.9	11.9	78	35.7	0.00925127
T3A 112M3-2	7.5	23.8	13.7	7.94	22.6	13.1	7.54	21.8	12.6	7.27	2920	90.1	91.0	90.0	0.92	3.5	3.8	2.1	11.4	80	40	0.01128847
T3A 132S1-2	5.5	18.2	10.5	6.08	17.3	10.0	5.77	16.7	9.64	5.56	2930	89.2	89.4	88.2	0.89	3.2	4	2.5	10	80	43.4	0.01521165
T3A 132S2-2	7.5	23.8	13.7	7.94	22.6	13.1	7.54	21.8	12.6	7.27	2930	90.1	90.9	90.7	0.92	2.6	3.6	1.9	10.1	80	51.7	0.01899607
T3A 132M1-2	9.2	29.4	17.0	9.79	27.9	16.1	9.30	26.9	15.5	8.96	2930	90.6	91.2	90.5	0.91	3.2	4.2	2.6	11.6	81	58.3	0.02161887
T3A 132M2-2	11	34.5	19.9	11.5	32.8	18.9	10.9	31.6	18.2	10.5	2930	91.2	91.5	91.2	0.92	3.6	4.1	2.4	12.2	83	63.5	0.02414181
T3A 132M3-2	15	47.7	27.6	15.9	45.3	26.2	15.1	43.7	25.2	14.6	2940	91.9	92.1	91.2	0.9	4.9	4.9	2	14.4	86	75	0.02855696
T3A 160M1-2	11	36.1	20.8	12.0	34.3	19.8	11.4	33.0	19.1	11.0	2960	91.2	91	89.6	0.88	3.2	4	1.4	10.3	86	85.5	0.05961337
T3A 160M2-2	15	48.3	27.9	16.1	45.8	26.5	15.3	44.2	25.5	14.7	2960	91.9	91.5	89.9	0.89	3.9	4.2	1.4	11.4	86	104	0.07675122
T3A 160L1-2	18.5	57.9	33.4	19.3	55.0	31.8	18.3	53.0	30.6	17.7	2950	92.4	92.8	91.8	0.91	3	3	1.5	9.1	86	121	0.09225175
T3A 160L2-2	22	68.6	39.6	22.9	65.2	37.6	21.7	62.8	36.3	20.9	2960	92.7	92.8	92.5	0.91	3.8	4	1.6	12.7	88	132	0.10748540
T3A 180M-2	22	68.6	39.6	22.9	65.2	37.6	21.7	62.8	36.3	20.9	2960	92.7	93	92.4	0.91	2.7	3.3	1.7	9	88	130.6	0.10467740
T3A 200L1-2	30	94.0	54.3	31.3	89.3	51.6	29.8	86.1	49.7	28.7	2960	93.3	93.2	92.2	0.9	3.5	3.8	1.8	10.2	90	158	0.13673820
T3A 200L2-2	37	115.5	66.7	38.5	109.7	63.3	36.6	105.7	61.0	35.2	2960	93.7	93.6	92.6	0.9	3.6	3.7	1.7	9.8	90	173.1	0.16330820
T3A 631-4	0.12	0.70	0.40	0.23	0.66	0.38	0.22	0.64	0.37	0.21	1360	64.8	63.7	57.6	0.7	2.2	2.3	2	3.5	52	3.8	0.00030500
T3A 632-4	0.18	0.97	0.56	0.32	0.92	0.53	0.31	0.89	0.51	0.30	1400	69.9	69.6	65.4	0.7	2.2	2.5	2.1	4.1	52	4.5	0.00039900
T3A 633-4	0.25	1.27	0.73	0.42	1.21	0.70	0.40	1.16	0.67	0.39	1395	75	75.1	71.5	0.69	2.9	3	2.7	4.7	55	5.3	0.00052391
T3A 711-4	0.25	1.30	0.75	0.43	1.23	0.71	0.41	1.19	0.69	0.40	1410	73.5	73.2	69	0.69	2.3	2.5	2.1	4.5	55	5.8	0.00071700
T3A 712-4	0.37	1.85	1.07	0.62	1.76	1.02	0.59	1.70	0.98	0.57	1420	77.3	77.1	73.6	0.68	2.8	3	2.5	5.2	55	7	0.00096500
T3A 801-4	0.55	2.80	1.62	0.93	2.66	1.54	0.89	2.56	1.48	0.85	1440	80.8	79.9	76	0.64	3.1	3.3	2.4	6.2	57	9.5	0.00169042
T3A 802-4	0.75	3.47	2.00	1.16	3.29	1.90	1.10	3.17	1.83	1.06	1440	82.5	82.5	80.1	0.69	3.1	3.1	2.5	6.3	58	11.7	0.00228457
T3A 803-4	1.1	4.65	2.69	1.55	4.42	2.55	1.47	4.26	2.46	1.42	1430	84.1	84.9	83.7	0.74	3	3.1	2.6	6.6	61	13.8	0.00299754
T3A 90S-4	1.1	4.65	2.69	1.55	4.42	2.55	1.47	4.26	2.46	1.42	1440	84.1	84.1	81.8	0.74	3.7	3.8	3.1	7.7	61	15.1	0.00384181

T3A Series IE3 Efficiency Motors Technical Data (at 50Hz)

Model	Power	Current(A)			Current(A)			Current(A)			Speed (r/min)	Eff.			Power Factor	T _{start} /T _n (Times)	T _{max} /T _n (Times)	T _{min} /T _n (Times)	I _g /I _n (Times)	Noise dB(A)	W.T (kg)	Inertia (kg·m ²)
		220V	380V	660V	230V	400V	690V	240V	415V	720V		100%	75%	50%								
T3A 90L1-4	1.5	6.34	3.66	2.11	6.02	3.48	2.01	5.80	3.35	1.93	1440	85.3	85.3	83.1	0.73	4.1	4.1	3.4	8.1	61	18	0.00468546
T3A 100L1-4	2.2	8.14	4.70	2.71	7.74	4.47	2.58	7.46	4.31	2.49	1450	86.7	87.2	86.2	0.82	2.9	3.5	2.4	8	64	23.9	0.00875401
T3A 100L2-4	3	11.5	6.66	3.85	11.0	6.33	3.65	10.6	6.10	3.52	1450	87.7	88	86.9	0.78	3.3	3.4	2.7	8.1	64	28.3	0.01106275
T3A 112M1-4	4	14.5	8.37	4.83	13.8	7.95	4.59	13.3	7.66	4.42	1450	88.6	88.8	88.2	0.82	3.1	3.7	2.6	8.6	65	33.9	0.01529165
T3A 112M2-4	5.5	20.2	11.7	6.73	19.2	11.1	6.39	18.5	10.7	6.16	1450	89.6	89.9	89.1	0.8	3.8	3.7	2.5	9.1	71	39.1	0.04875837
T3A 132S-4	5.5	19.2	11.1	6.41	18.3	10.5	6.09	17.6	10.2	5.87	1460	89.6	89.8	89.4	0.84	2.3	3.5	1.9	9	71	47.4	0.03446419
T3A 132M1-4	7.5	26.0	15.0	8.66	24.7	14.3	8.23	23.8	13.7	7.93	1460	90.4	90.9	90.3	0.84	2.6	3.4	2.2	8.9	71	57.4	0.04359680
T3A 132M2-4	9.2	32.5	18.8	10.8	30.9	17.8	10.3	29.8	17.2	9.93	1460	90.8	91.3	90.7	0.82	3.2	3.6	2	10	74	60	0.05133916
T3A 132M3-4	11	37.7	21.8	12.6	35.8	20.7	11.9	34.5	19.9	11.5	1460	91.4	92	91.6	0.84	3.5	3.7	2.1	10.5	75	67	0.06037189
T3A 160M-4	11	38.2	22.0	12.7	36.3	20.9	12.1	34.9	20.2	11.6	1470	91.4	91.7	89.8	0.83	2.6	2.8	1.8	7.6	75	89	0.10537280
T3A 160L1-4	15	50.4	29.1	16.8	47.9	27.7	16.0	46.2	26.7	15.4	1470	92.1	92.3	91.3	0.85	3	3	2	9.2	75	110.5	0.13703810
T3A 180M-4	18.5	61.1	35.3	20.4	58.1	33.5	19.4	56.0	32.3	18.7	1470	92.6	92.8	92.1	0.86	2.8	3.3	1.9	8.8	80	130	0.17329310
T3A 180L-4	22	72.4	41.8	24.1	68.8	39.7	22.9	66.3	38.3	22.1	1470	93	93.1	92.3	0.86	3	3.5	2.1	9.3	80	145.4	0.20063720
T3A 200L-4	30	95.8	55.3	32.0	91.1	52.6	30.4	87.8	50.7	29.3	1470	93.6	93.7	92.9	0.88	3.2	3.7	2.1	9.7	83	180	0.26510010
T3A 711-6	0.18	1.20	0.69	0.40	1.14	0.66	0.38	1.09	0.63	0.36	930	63.9	61	53.4	0.62	2.4	2.6	2.3	3.5	52	5.4	0.00079000
T3A 712-6	0.25	1.48	0.85	0.49	1.40	0.81	0.47	1.35	0.78	0.45	920	68.6	67.2	61.2	0.65	2.2	2.5	2.2	3.7	52	6.3	0.00102000
T3A 801-6	0.37	1.95	1.12	0.65	1.85	1.07	0.62	1.78	1.03	0.59	930	73.5	73.8	70.5	0.68	2.2	2.5	2.1	4.1	56	9.3	0.00218934
T3A 802-6	0.55	2.64	1.52	0.88	2.51	1.45	0.84	2.42	1.40	0.81	930	77.2	78.1	75.7	0.71	2.3	2.4	2.1	4.3	56	10.9	0.00293059
T3A 803-6	0.75	3.97	2.29	1.32	3.77	2.18	1.26	3.64	2.10	1.21	935	78.9	78.2	74.4	0.63	2.8	3.1	2.6	4.9	59	12.5	0.00322709
T3A 90S-6	0.75	3.73	2.16	1.24	3.55	2.05	1.18	3.42	1.97	1.14	950	78.9	80.1	78.1	0.67	2.3	2.6	2.1	4.7	59	13.8	0.00406984
T3A 90L-6	1.1	5.33	3.08	1.78	5.07	2.93	1.69	4.88	2.82	1.63	950	81	81.1	78.4	0.67	2.7	2.9	2.5	5.2	59	16.2	0.00548739
T3A 90L2-6	1.5	7.14	4.12	2.38	6.78	3.92	2.26	6.54	3.78	2.18	950	82.5	82.7	80.5	0.67	2.9	3	2.5	5.6	61	21.3	0.00689472
T3A 100L1-6	1.5	6.84	3.95	2.28	6.49	3.75	2.16	6.26	3.61	2.09	955	82.5	83	81.8	0.7	2.4	2.9	2.2	5.5	61	22.1	0.00913729
T3A 100L2-6	2.2	9.54	5.51	3.18	9.06	5.23	3.02	8.73	5.04	2.91	955	84.3	85.1	83.9	0.72	2.5	3	2.2	6.2	64	27.7	0.01272548
T3A 112M1-6	2.2	10.1	5.83	3.37	9.59	5.54	3.20	9.25	5.34	3.08	965	84.3	84.5	83.2	0.68	2	2.5	1.9	5.5	64	27.1	0.01767543
T3A 112M2-6	3	13.4	7.72	4.46	12.7	7.33	4.23	12.2	7.07	4.08	965	85.6	86.2	84.8	0.69	2.5	2.9	1.9	6.3	64	33.1	0.02140041
T3A 132S-6	3	12.5	7.20	4.15	11.8	6.84	3.95	11.4	6.59	3.80	965	85.6	86	85.1	0.74	2	2.7	1.7	6	64	38.6	0.03380429
T3A 132M1-6	4	16.4	9.46	5.46	15.6	8.99	5.19	15.0	8.66	5.00	970	86.8	87.1	86.2	0.74	2.3	3	1.8	6.8	68	47.6	0.04394565
T3A 132M2-6	5.5	23.2	13.4	7.72	22.0	12.7	7.34	21.2	12.2	7.07	975	88	88.3	87.1	0.71	2.9	3.5	2.2	7.4	68	55.7	0.05398713
T3A 132M3-6	7.5	30.8	17.8	10.3	29.2	16.9	9.74	28.2	16.3	9.39	970	89.1	89.6	88.6	0.72	3.3	3.2	2	8.3	68	67.6	0.07072295
T3A 160M-6	7.5	29.1	16.8	9.72	27.7	16.0	9.23	26.7	15.4	8.90	975	89.1	89.5	88.5	0.76	2.2	2.9	1.8	7.3	68	79.6	0.10901170
T3A 160L-6	11	41.1	23.7	13.7	39.0	22.5	13.0	37.6	21.7	12.5	975	90.3	90.8	89.9	0.78	2.7	2.9	1.2	8.4	73	105	0.15484950
T3A 180L-6	15	52.1	30.1	17.4	49.5	28.6	16.5	47.7	27.6	15.9	980	91.2	91	89.8	0.83	2.5	3.3	2.1	8.2	77	125.2	0.27515650
T3A 200L1-6	18.5	67.2	38.8	22.4	63.8	36.9	21.3	61.5	35.5	20.5	980	91.7	91.3	90	0.79	2.5	3.3	2	8.5	80	143	0.33206640
T3A 200L2-6	22	79.5	45.9	26.5	75.5	43.6	25.2	72.8	42.0	24.3	980	92.2	92	90.9	0.79	2.8	3.5	2.2	8.8	80	162	0.38831630

T4A Series IE4 Efficiency Motors Technical Data (at 50Hz)

Model	Power	Eff.(%)			Power factor (cos Φ)	Current(A)			Speed (r/min)	T _n (Nm)	T _{start} /T _n (Times)	T _{max} /T _n (Times)	T _{min} /T _n (Times)	I _l /I _n (Times)	Noise dB(A)	W.T (kg)	Inertia (kg*m ²)
		100%	75%	50%		230V	400V	690V									
T4A631-2	0.18	70.8	68.8	63.6	0.75	0.85	0.49	0.28	2870	0.624	2.6	2.9	2	5.5	61	3.8	0.00245
T4A631-2	0.25	74.3	73.1	68.7	0.77	1.1	0.63	0.37	2880	0.8637	2.7	3.2	2.4	6.3	61	4.5	0.00303
T4A711-2	0.37	78.1	77.3	73.4	0.78	1.52	0.88	0.51	2890	1.2739	2.8	3.3	2.3	6.7	64	5.7	0.00421
T4A712-2	0.55	81.5	81.1	77.9	0.79	2.14	1.23	0.71	2890	1.8936	2.9	3.5	2.5	6.8	64	6.7	0.00569
T4A801-2	0.75	83.5	83.6	81.5	0.8	2.82	1.62	0.94	2900	2.5733	3.7	3.9	2.5	8.8	67	9.5	0.01124
T4A802-2	1.1	85.2	85.2	83.3	0.82	3.95	2.27	1.32	2910	3.7612	4	4.2	2.6	10	67	12	0.01508
T4A90S-2	1.5	86.5	86.5	84.6	0.81	5.37	3.09	1.79	2910	5.1289	3.6	2.8	4	9.6	72	14.5	0.02296
T4A90L-2	2.2	88	88.2	86.9	0.83	7.56	4.35	2.52	2900	7.5483	4	4.2	3	10.5	72	18.5	0.03086
T4A100L-2	3	89.1	89.4	88.4	0.9	9.39	5.4	3.13	2910	10.258	3.7	2.9	3.9	11	76	28	0.05939
T4A112M-2	4	90	90.4	89.7	0.91	12.3	7.05	4.09	2920	13.63	3.5	2.6	3.9	10.5	77	35	0.0927
T4A132S1-2	5.5	90.9	90.9	89.5	0.9	17.3	9.93	5.63	2940	18.614	3.4	2.3	4	10.5	80	49	0.17735
T4A132S2-2	7.5	91.7	91.7	90.7	0.91	23.1	13.3	7.52	2940	25.383	3.8	2.3	4.1	10	80	59	0.22288
T4A160M1-2	11	92.6	93.2	92.1	0.91	32.6	18.8	10.9	2950	37.102	3.5	2.5	3.8	10	86	95	0.069134
T4A160M2-2	15	93.3	93.8	92.8	0.92	43.9	25.2	14.6	2960	50.422	3.6	2.5	3.8	10	86	116	0.093048
T4A160L-2	18.5	93.7	94.2	93.1	0.93	53.3	30.6	17.8	2960	62.188	3.8	2.5	4	10.3	86	136	0.107485
T4A631-4	0.12	69.8	68.2	66.5	0.66	0.65	0.38	0.22	1400	0.8529	2.3	2.7	2.3	4	52	4	0.00336
T4A632-4	0.18	74.7	74.1	69.7	0.67	0.9	0.53	0.3	1400	1.2793	2.6	2.8	2.4	4.3	52	4.8	0.00343
T4A711-4	0.25	77.9	77	72.9	0.65	1.24	0.71	0.41	1430	1.7395	3	3.4	2.8	5.6	55	6.5	0.00841
T4A712-4	0.37	81.1	80.5	77.2	0.66	1.74	1	0.58	1430	2.5745	3.4	3.6	3	6.2	55	8	0.01188
T4A801-4	0.55	83.9	83.3	80.6	0.67	2.46	1.41	0.82	1440	3.8003	3.4	3.7	3	6.8	57	11	0.02047
T4A802-4	0.75	85.7	85.3	82.8	0.67	3.28	1.97	1.09	1450	5.1466	3.7	4	3.1	7.3	58	13	0.02646
T4A90S-4*	1.1	87.2	87.1	84.4	0.69	4.59	2.64	1.53	1435	7.6272	4.8	3.8	4.1	8.2	61	18	0.04685
T4A90L-4*	1.5	88.2	88.1	86.1	0.71	6.01	3.46	2	1455	10.258	4.8	3.8	4.2	9.2	61	21.5	0.05696
T4A100L-4	2.2	89.5	89.6	88.2	0.76	8.12	4.67	2.71	1460	14.993	3.5	3	4.3	9.5	64	26	0.10435
T4A100L2-4*	3	90.4	89.7	88.1	0.75	11.1	6.41	3.7	1460	20.445	3.8	3.4	4.5	9.5	64	33	0.13074
T4A112M-4*	4	91.1	91	90	0.8	14	8.08	4.59	1460	27.26	4	3	4.5	9.8	65	41	0.19436
T4A132S-4	5.5	91.9	92.2	91.5	0.8	18.8	10.9	6.26	1470	37.228	3.4	2.1	4.1	10	71	56	0.043597
T4A132M-4	7.5	92.6	92.8	92.2	0.81	25.1	13.9	8.37	1470	50.765	4.4	2.2	4	10.2	71	74	0.05521
T4A160M-4	11	93.3	93.5	92.8	0.82	36.1	20.7	12	1475	74.203	2.8	2.2	3.2	9.1	75	100	0.127619
T4A160L-4	15	93.9	94.1	93.7	0.83	48.3	27.9	16.1	1475	101.19	3.2	2.2	3.5	9.2	75	126	0.165297
T4A711-6	0.18	70.1	66.8	60.2	0.6	1.07	0.62	0.36	940	1.9053	2.7	2.3	2.9	4.1	52	6.3	0.00102
T4A712-6	0.25	74.1	71.5	65.3	0.6	1.41	0.81	0.47	940	2.6463	2.8	2.4	2.9	4.5	52	7.4	0.00125
T4A801-6	0.37	78	76.7	72.2	0.61	1.95	1.12	0.65	950	3.8753	2.7	3.1	2.5	4.8	56	11	0.002634
T4A802-6*	0.55	80.9	80	76.3	0.61	2.8	1.61	0.93	950	5.7605	3.2	3.5	2.8	5.3	56	14	0.003677
T4A90S-6*	0.75	82.7	81.6	77.7	0.63	3.61	2.08	1.2	960	7.7734	2.8	2.4	3.2	5.7	59	15.5	0.004683
T4A90L-6*	1.1	84.5	83.5	80.5	0.65	5.03	2.89	1.68	960	11.401	3.1	2.5	3.3	5.9	59	20	0.006503
T4A100L-6	1.5	85.9	86.2	84.5	0.72	6.09	3.5	2.03	965	15.466	2.7	1.9	3	6.5	61	28	0.012757
T4A112M-6	2.2	87.4	87.2	85.4	0.69	9.16	4.98	3.05	970	22.567	3	2.6	3.8	7.5	64	35	0.02289
T4A132S-6	3	88.6	88.7	87.4	0.71	12	6.88	3.99	975	30.615	2.5	1.9	3.2	7.1	64	47	0.043846
T4A132M1-6	4	89.5	89.8	88.8	0.74	15.2	8.72	5.05	975	40.821	2.8	1.8	3.4	8	68	55	0.053987
T4A132M2-6	5.5	90.5	90.7	89.7	0.75	20.3	11.7	6.78	975	56.128	3.3	1.8	3.3	8.2	68	68	0.070723
T4A160M-6	7.5	91.3	91.5	90.3	0.77	26.7	15.4	8.89	980	76.148	3.3	1.8	3.3	8.5	68	92	0.128267
T4A160L-6	11	92.3	92.6	91.2	0.77	38.9	22.3	12.9	980	111.68	3.4	1.8	3.4	8.5	73	120	0.18523
T4A712-8	0.12	62.3	59.8	52.6	0.6	0.81	0.47	0.27	690	1.7304	2.2	2.3	2	2.9	50	7.5	0.001327
T4A801-8	0.18	67.2	64.1	56.8	0.52	1.29	0.74	0.43	710	2.5225	2.3	2.7	2	3.4	52	10	0.002323
T4A802-8	0.25	70.8	67.9	61	0.52	1.7	0.98	0.57	710	3.5035	2.7	3.1	2.4	3.7	52	12	0.00308
T4A90S-8	0.37	74.3	71.9	65.7	0.52	2.4	1.38	0.8	715	5.149	2.5	2.2	2.9	3.9	56	14	0.00407
T4A90L-8	0.55	77	75.4	70.1	0.52	3.45	1.98	1.15	710	7.7077	2.5	2.2	2.9	4	56	17.5	0.005498
T4A100L1-8	0.75	78.4	77.9	74.4	0.64	3.75	2.16	1.25	710	10.511	2.1	2.1	2.8	4.3	59	20.5	0.00834
T4A100L2-8	1.1	80.8	80.7	78.1	0.64	5.34	3.07	1.78	710	15.415	2.3	1.8	2.6	4.5	59	26	0.011561
T4A112M-8	1.5	82.6	82.3	79.5	0.63	7.24	4.16	2.41	715	20.874	2.5	2.3	3	5.1	61	33	0.0214
T4A132S-8	2.2	84.5	85.5	82.5	0.64	10.2	5.87	3.4	725	30.193	2.3	2	3	5.6	64	50	0.048867
T4A132M-8	3	85.9	86	84.2	0.67	13.1	7.52	4.36	725	41.172	2.5	2.1	3.1	6.3	64	61	0.062355
T4A160M1-8	4	87.1	87.5	86.3	0.69	16.7	9.61	5.57	725	54.9	2.2	1.7	2.8	5.6	68	76	0.101417
T4A160M2-8	5.5	88.3	88.7	87.8	0.7	22.3	12.8	7.45	725	75.483	2.5	1.8	3	6.1	68	94	0.135595
T4A160L-8	7.5	89.3	89.7	89	0.71	29.7	17.1	9.9	725	102.93	2.6	1.6	3	6.6	68	116	0.177635

Note: Model with * Will be Longer Non-drive Endshield & Fan Cover.

